



Performace
Cycling
Shoes

Index

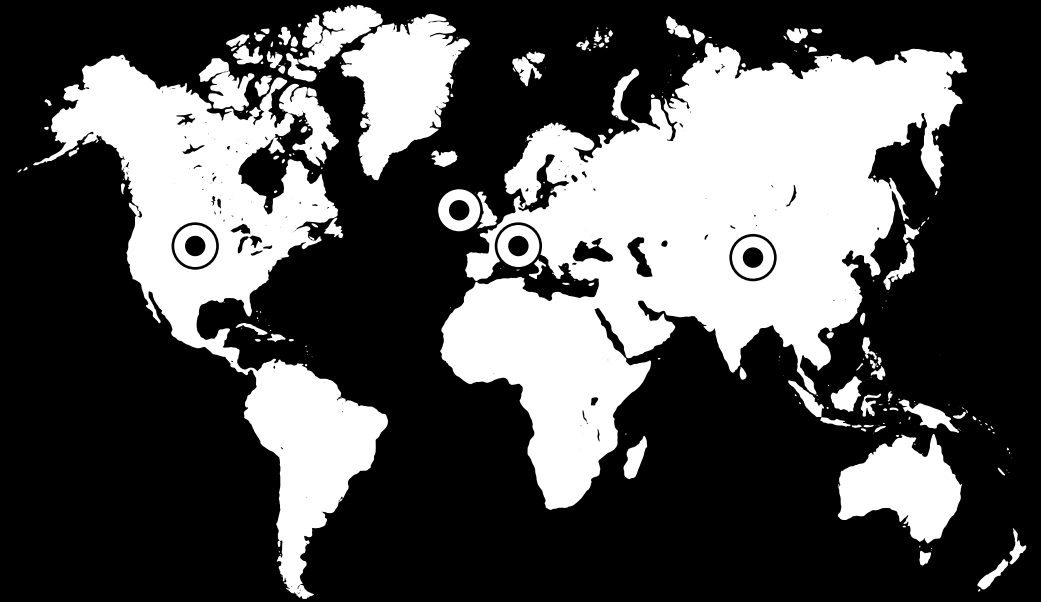
Brand intro	_____	3
Cima	_____	6
Tensione	_____	10
Distanza	_____	14
Cento	_____	16
Accessories	_____	19



The name UDOG
stands for *UNDERDOG**


*A famous English expression for a competitor who is not expected to win.

The UDOG Network - combining the foremost experts in the cycling industry, from Italy and the UK to the United States and Asia.



Born in Italy from the love of cycling.

From Veneto, a region with an impressive cycling culture, and an obsession for performance, fashion and style, UDOG embraces our places, our passions and our experiences.



**Play like
a champion
train like
an underdog
with..**

udog | CIMA

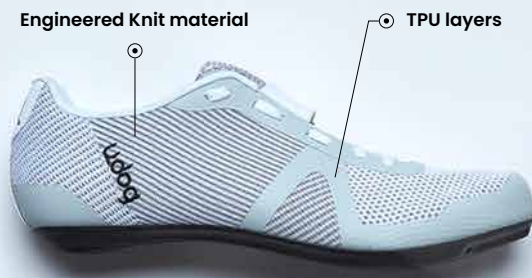


The exact blend

The perfect blend between comfort and high performance, stiffness and softness. A shoe that delivers a new level of comfort and attainment.

Size CIMA / 38 - 48 (Pure Black up to size 46 only)

Retail Price CIMA / 250,00 €



Pure black



Salt White



Integrated rubber caps

Direct ventilation channel

PTS (Pocket Tongue System)

Generous Toe Box





PTS

The new CIMA shoes incorporate an innovative Pocket Tongue System (PTS) that provides a hyper-clean design via a unique and patented closure system.

ROAD - Performance Cycling Shoes

- Model - CIMA
- Surface - Road
- Type - Lightweight climber shoe
- Specifics - Ultra stiff carbon sole
Super comfortable upper
- What - Spring/summer race shoes

Lace-Up closure

Traditional laces tend to loosen while pedaling, so CIMA uses proprietary laces that are a flatter construction which creates a better knot and guarantees the best fitting shoe no matter the ride from the most demanding climbs to the hardest flat races.





Carbon Outsole

Designed to create the best blend between comfort and stiffness, CIMA uses an ultra-stiff high carbon composite outsole with a stiffness index of 11. This is developed with a directional ventilation channel, and integrated rubber heel and toe caps.

- Model - CIMA
- Surface - Road
- Type - Lightweight climber shoe
- Specifics - Ultra stiff carbon sole
Super comfortable upper
- What - Spring/summer race shoes

Knit technology

UDOG's knit technology for seamless comfort. Designed to create a unique upper shoe that is lightweight, supportive, breathable and waterproof.



udog | TENSIONE



It's a wrap!

Cycling is about pushing and pulling pedals for hours. So we designed and developed the first ever cycling shoe that wraps around your feet when pulling up.

Size TENSIONE / 38 - 48

Retail Price TENSIONE / 165,00 €



● ●
Pure black



● ●
Octane



● ●
Arctic White





TWS



Tension Wrap System.
A comfortable and supportive shoe is a foundation of a good ride. TWS holds your foot for complete comfort during the entire pedal stroke.

- Model - TENSIONE
- Surface - Road
- Type - Four season shoes
- Specifics - Light and fully supportive
- What - Train and race in comfort

Laces



TENSIONE uses proprietary laces that are flat and pressed, firm without air inside, creating a rope knot effect that guarantee the best fit shoe from the most demanding crit races to the longest endurance rides.





Weight ⌵

Minimalistic design eliminates all plastic and metal parts, stitches, uses the most advance materials creating a product that is ultra-comfortable, supportive and lightweight. At 245grams in size 42 TENSIONE is by far the lightest shoe in its category.

ROAD - Performance Cycling Shoes

- Model - TENSIONE
- Surface - Road
- Type - Four season shoes
- Specifics - Light and fully supportive
- What - Train and race in comfort

Comfort & Upper ⌵

The shoe has been developed with comfort in mind. The design is consciously minimal, eliminating all hardware, plastic and metal parts, that create pressure points.



udog | DISTANZA



● ●
Ash Grey



● ●
Cinder Black
CARBON



Be at one with gravel

DISTANZA gravel /off-road shoe incorporates an innovative, crag inspired outsole that wraps over the toe and around the heel for increased durability, protection and distinctive design.

Size DISTANZA / 38 - 48

Retail Price DISTANZA / 180,00 €

Retail Price DISTANZA CARBON / 250,00 €

Molded sticky rubber to create a rugged look



Rubber around the heel

Rubber over the toe



Lace pocket storage

Generous Toe Box



Outsole

This outsole, built around a carbon composite core, features a molded sticky rubber which winds over the toe and around the heel to create a rugged look.

The Nylon Carbon Reinforced rubber outsole of DISTANZA and the Full Carbon composite rubber outsole of DISTANZA CARBON.

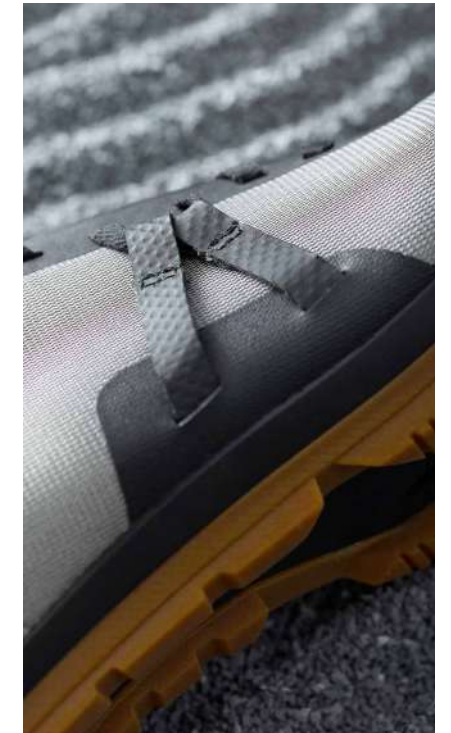
GRAVEL - Performance Cycling Shoes

- Model - DISTANZA
- Surface - Gravel/Off Road
- Type - From trails to city streets
- Specifics - Light and fully supportive
- What - Train and race in comfort

TWS

Tension Wrap System.

A comfortable and supportive shoe is a foundation of a good ride. TWS holds your foot for complete comfort during the entire pedal stroke.





Laces



DISTANZA uses proprietary laces that are flat and pressed, firm without air inside, creating a rope knot effect that guarantees the best fit shoe from the most demanding crit races to the longest endurance rides.

- Model - TENSIONE
- Surface - Road
- Type - Everyday, four season shoes
- Specifics - Light fast and fully supportive
- What - Train and race in super comfort

Engineered Mesh



The upper is made of innovative three-dimensional engineered mesh, producing a material that is not only light and comfortable but also durable and breathable.



GRAVEL - Performance Cycling Shoes

udog | CENTO



Dial it up

CENTO incorporates the innovative brand new to market UDOG's Micro Twist dial. It's a unique micro-adjusting rotor provides a uniform, customized fit for enhanced support and stability.

Size CENTO / 38 - 48
Retail Price CENTO / 295,00 €



Micro Twist Dial

It's a unique micro-adjusting rotor provides a uniform, customized fit for enhanced support and stability. The ergonomic dial with soft rubber edge guarantees greater grip in any ride condition.

Its dial diameter is 30mm provides better handling in racing situation. The Micro Twist is markable lower in profile, only 10mm thickness for a more aerodynamic profile. Woven laces are very flexible yet ultra-resistant.

ROAD - Performance Cycling Shoes

- Model - CENTO
- Surface - Road
- Type - Performance Shoes
- Specifics - Mechanical Closure
- What - Races and Training

TWS 2.0

TWS 2.0 system acts primarily across the independent sensors on a larger area of the shoe's upper, pulling the eyelets inwards consistently from all directions for a more supportive and comfortable fit. Using textile lace guides further eliminates pressure hot spots.





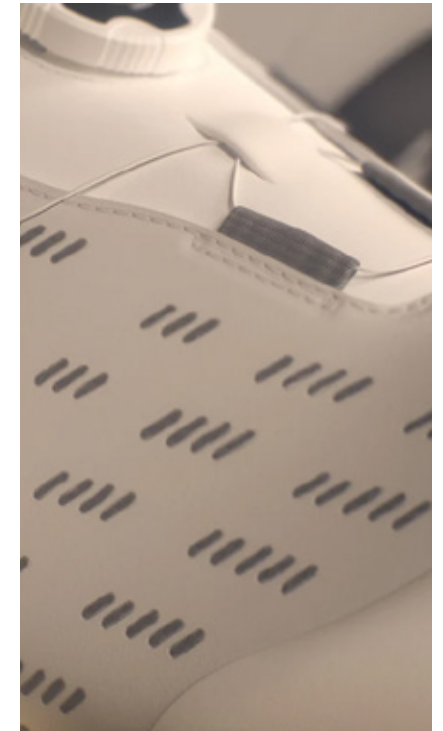
Stiff Carbon Sole

Ultra-stiff high carbon composite outsole with a stiffness index of 11. It's developed with a directional ventilation channel, and integrated rubber heel and toe caps. The outsole features a large platform for easy cleat engagement, and generous fore/aft bolts adjustments for precise fitting. Titanium alloy cleat nuts can rotate to position pedal/cleats 5mm rearward.

- Model - CENTO
- Surface - Road
- Type - Performance Shoes
- Specifics - Mechanical Closure
- What - Races and Training

Microfiber Upper

The new CENTO shoe uses tech laser perforated microfiber leather, it's a lightweight and soft yet resistant material, ideal for racing performance shoes. The adaptive material used on the upper allow natural movements of the foot where needed for comfort, while data-driven TPU reinforcement areas keep the foot secured for optimum power delivery and efficiency.



LACES

**PACK HOT**

Grey
Brick
Teal

PACK MILD

Red
White
Black

Laces length 120 cm, the recommended one depending on the number of eyelets in the shoe. They are flat and pressed, with no air inside, creating a rope knot effect that ensures the best shoe fit from the most demanding races to the longest endurance runs.

Retail Price: 15,00 € x pack

SOCKS



Active compression construction technology. High-gauge 200-needle construction. Increases circulation and improves performance and recovery. Sizes S/M, L/X

COLOR:
White / Black / Teal / Grey / Brick

Retail Price: 15,00 €

WATER BOTTLE



Easy-squeeze bottle with ergonomic cap and removable, lockable spout. Made of 100% recyclable polyethylene without BPA/F/S and PET(E). Capacity: 500ml

Retail Price: 12,00 €

udog

Thank You!

udog.cc